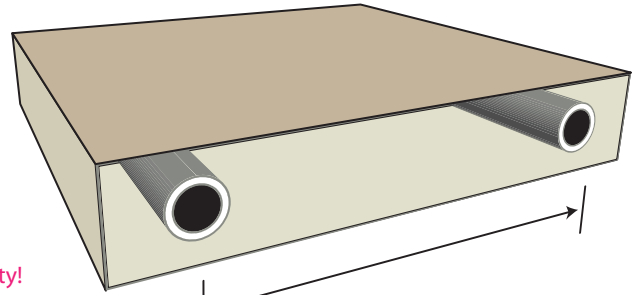




STEP 01

Position monument on property.

Tip - take the time to drive by from all directions to maximize visibility!



STEP 02

Tilt your monument over and measure between holes.

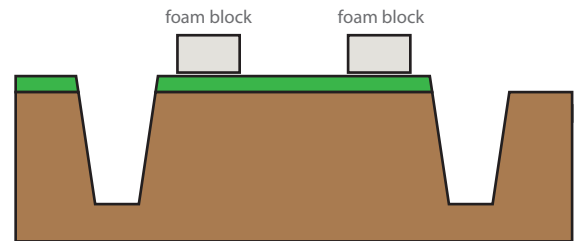
Tip - leaving the unit in the crate will prevent getting it dirty!

STEP 03

Dig your holes & remove monument crate.

Aim for 24" or more in the ground.

Tip - if you run into problems, you can cut the metal pipes!



STEP 04

Place foam 'spacers.'

There are several blocks of scrap foam protecting the sign during transit. Set two in place between the holes as shown.

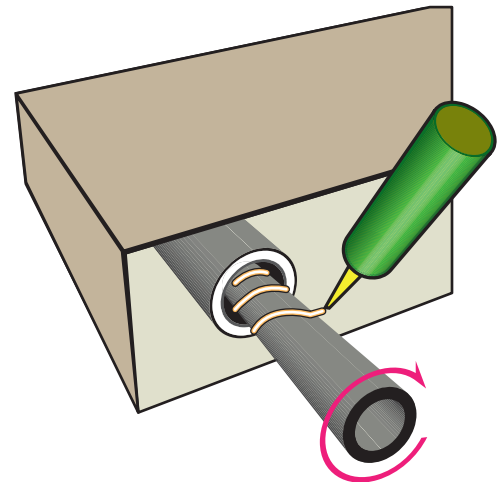
Tip - you can use different size pieces to compensate for uneven ground!

STEP 05

Insert metal pipes with adhesive.

The receiving holes are larger diameter than the metal pipes to compensate for any errors. The adhesive will bond and expand to fill the void. Twist the metal pipe, applying adhesive as you insert (like a barber poll stripe).

Tip - DO NOT get this adhesive on your hands or clothing. While it is non-toxic, it will take weeks to wear off!

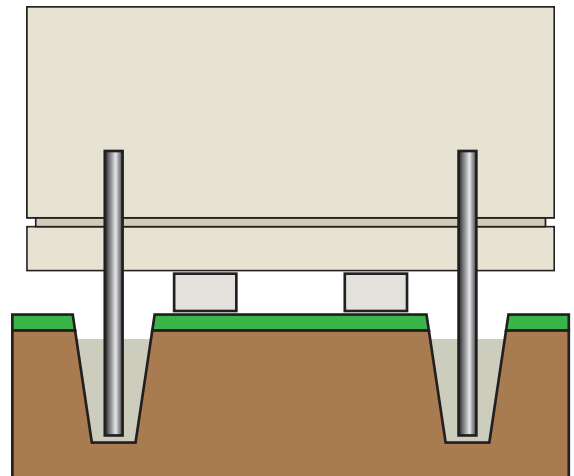


STEP 06

Drop monument in place and add concrete.

The purpose of the 'spacers' is to allow 'wiggle' everything in place while adhesive is fresh, and room to shovel in Quikrete.

Tip - check ALL angles with a level!



STEP 07

Remove spacers.

That's it! Check all sides with level again & let set overnight.

Tip - consider leaving pieces of the wood crate under the monument as small spacers while it cures overnight.

This will make the monument 'float' above grade, which protects it from landscapers and vegetation growth. Building a mound by adding wood chips or topsoil is an inexpensive way to protect and draw attention to your investment!